

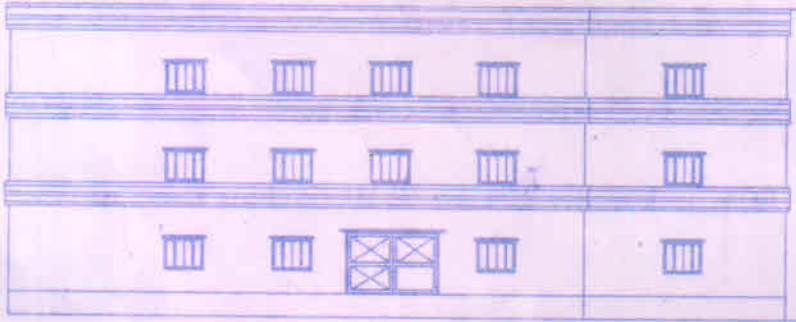


PLAN OF BUILDING FOR MANGLA KAMLA
HOMEOPATHIC MEDICAL COLLEGE &
HOSPITALAT- PADOULI, P. S. - PACHIRUKHI,
DISTT - SIWAN KHATA NO. - 271, KHEERA NO.-
2398/2433, THANA NO. - 404, TAUZI NO. - 1345.

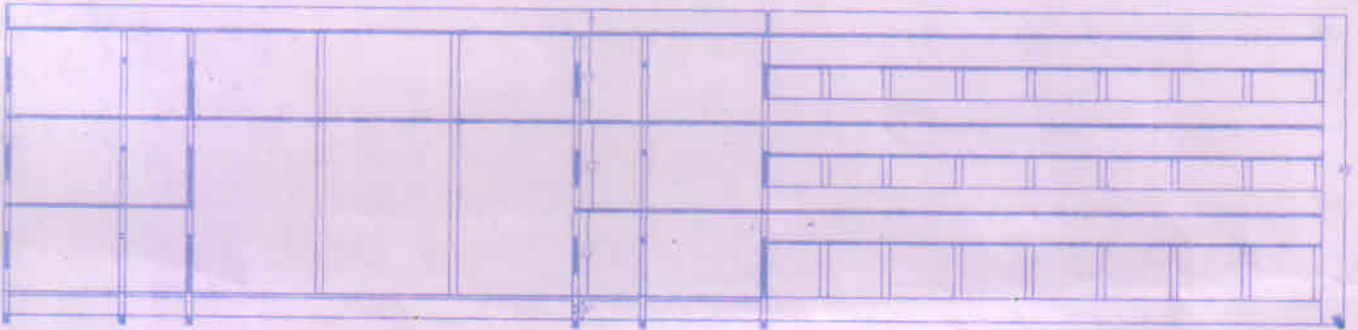
N- NI RASTA
S- LAL BABU SINGH & VIRENDRA SINGH
E- DAROGA SINGH, MAHESH SINGH
W- RAMAYAN SINGH, LAL BABU SINGH

TOTAL AREA
= 11818 Sqft
BUILT UP AREA
G.F= 11818 Sqft
F.F= 11818 Sqft
S.F= 11818 Sqft
TOTAL BUILT UP AREA
= 35454 Sqft

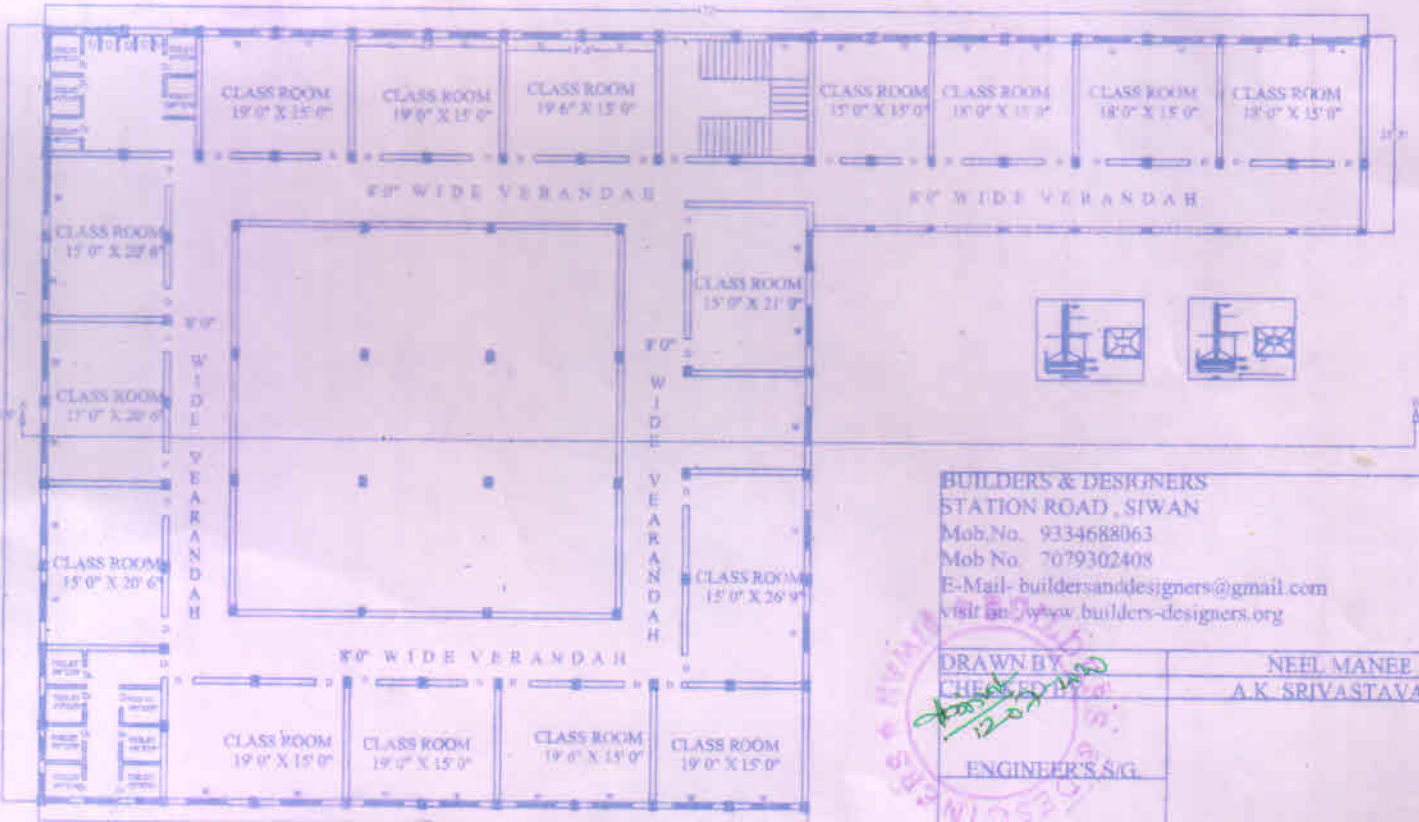
Sl. No.	Room	Area (Sqft)	Total Area (Sqft)
1	CLASS ROOM	1500	1500
2	CLASS ROOM	1500	3000
3	CLASS ROOM	1500	4500
4	CLASS ROOM	1500	6000
5	CLASS ROOM	1500	7500
6	CLASS ROOM	1500	9000
7	CLASS ROOM	1500	10500
8	CLASS ROOM	1500	12000
9	CLASS ROOM	1500	13500
10	CLASS ROOM	1500	15000
11	CLASS ROOM	1500	16500
12	CLASS ROOM	1500	18000
13	CLASS ROOM	1500	19500
14	CLASS ROOM	1500	21000
15	CLASS ROOM	1500	22500
16	CLASS ROOM	1500	24000
17	CLASS ROOM	1500	25500
18	CLASS ROOM	1500	27000
19	CLASS ROOM	1500	28500
20	CLASS ROOM	1500	30000
21	CLASS ROOM	1500	31500
22	CLASS ROOM	1500	33000
23	CLASS ROOM	1500	34500
24	CLASS ROOM	1500	36000
25	CLASS ROOM	1500	37500
26	CLASS ROOM	1500	39000
27	CLASS ROOM	1500	40500
28	CLASS ROOM	1500	42000
29	CLASS ROOM	1500	43500
30	CLASS ROOM	1500	45000
31	CLASS ROOM	1500	46500
32	CLASS ROOM	1500	48000
33	CLASS ROOM	1500	49500
34	CLASS ROOM	1500	51000
35	CLASS ROOM	1500	52500
36	CLASS ROOM	1500	54000
37	CLASS ROOM	1500	55500
38	CLASS ROOM	1500	57000
39	CLASS ROOM	1500	58500
40	CLASS ROOM	1500	60000
41	CLASS ROOM	1500	61500
42	CLASS ROOM	1500	63000
43	CLASS ROOM	1500	64500
44	CLASS ROOM	1500	66000
45	CLASS ROOM	1500	67500
46	CLASS ROOM	1500	69000
47	CLASS ROOM	1500	70500
48	CLASS ROOM	1500	72000
49	CLASS ROOM	1500	73500
50	CLASS ROOM	1500	75000
51	CLASS ROOM	1500	76500
52	CLASS ROOM	1500	78000
53	CLASS ROOM	1500	79500
54	CLASS ROOM	1500	81000
55	CLASS ROOM	1500	82500
56	CLASS ROOM	1500	84000
57	CLASS ROOM	1500	85500
58	CLASS ROOM	1500	87000
59	CLASS ROOM	1500	88500
60	CLASS ROOM	1500	90000
61	CLASS ROOM	1500	91500
62	CLASS ROOM	1500	93000
63	CLASS ROOM	1500	94500
64	CLASS ROOM	1500	96000
65	CLASS ROOM	1500	97500
66	CLASS ROOM	1500	99000
67	CLASS ROOM	1500	100500
68	CLASS ROOM	1500	102000
69	CLASS ROOM	1500	103500
70	CLASS ROOM	1500	105000
71	CLASS ROOM	1500	106500
72	CLASS ROOM	1500	108000
73	CLASS ROOM	1500	109500
74	CLASS ROOM	1500	111000
75	CLASS ROOM	1500	112500
76	CLASS ROOM	1500	114000
77	CLASS ROOM	1500	115500
78	CLASS ROOM	1500	117000
79	CLASS ROOM	1500	118500
80	CLASS ROOM	1500	120000
81	CLASS ROOM	1500	121500
82	CLASS ROOM	1500	123000
83	CLASS ROOM	1500	124500
84	CLASS ROOM	1500	126000
85	CLASS ROOM	1500	127500
86	CLASS ROOM	1500	129000
87	CLASS ROOM	1500	130500
88	CLASS ROOM	1500	132000
89	CLASS ROOM	1500	133500
90	CLASS ROOM	1500	135000
91	CLASS ROOM	1500	136500
92	CLASS ROOM	1500	138000
93	CLASS ROOM	1500	139500
94	CLASS ROOM	1500	141000
95	CLASS ROOM	1500	142500
96	CLASS ROOM	1500	144000
97	CLASS ROOM	1500	145500
98	CLASS ROOM	1500	147000
99	CLASS ROOM	1500	148500
100	CLASS ROOM	1500	150000



FRONT ELEVATION



SECTION ON AB



EXISTING FIRST FLOOR PLAN

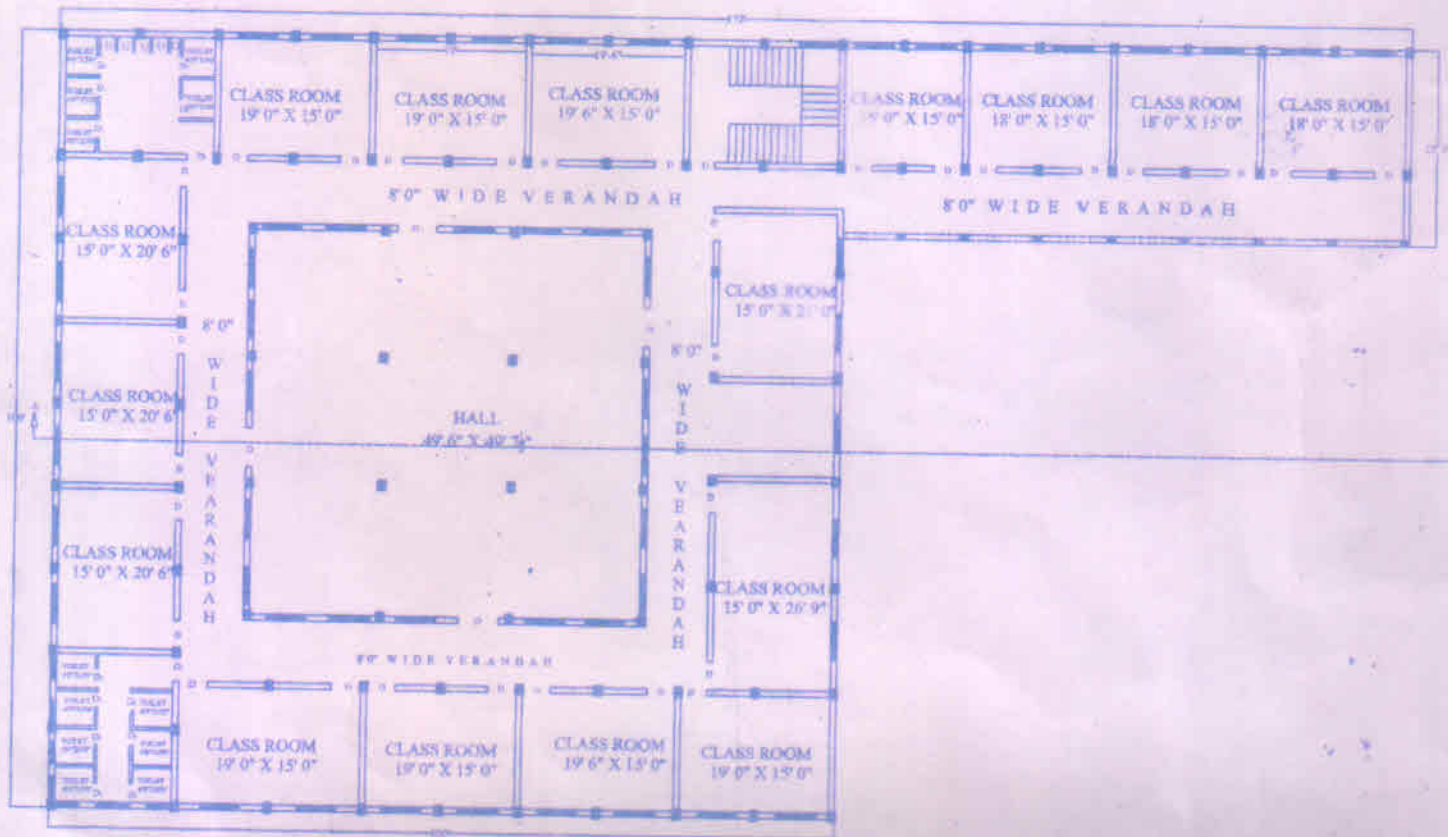
BUILDERS & DESIGNERS
STATION ROAD, SIWAN
Mob.No. 9334688063
Mob No. 7079302408
E-Mail- buildersanddesigners@gmail.com
visit on www.builders-designers.org

DRAWN BY
CHECKED BY
ENGINEER'S S/G

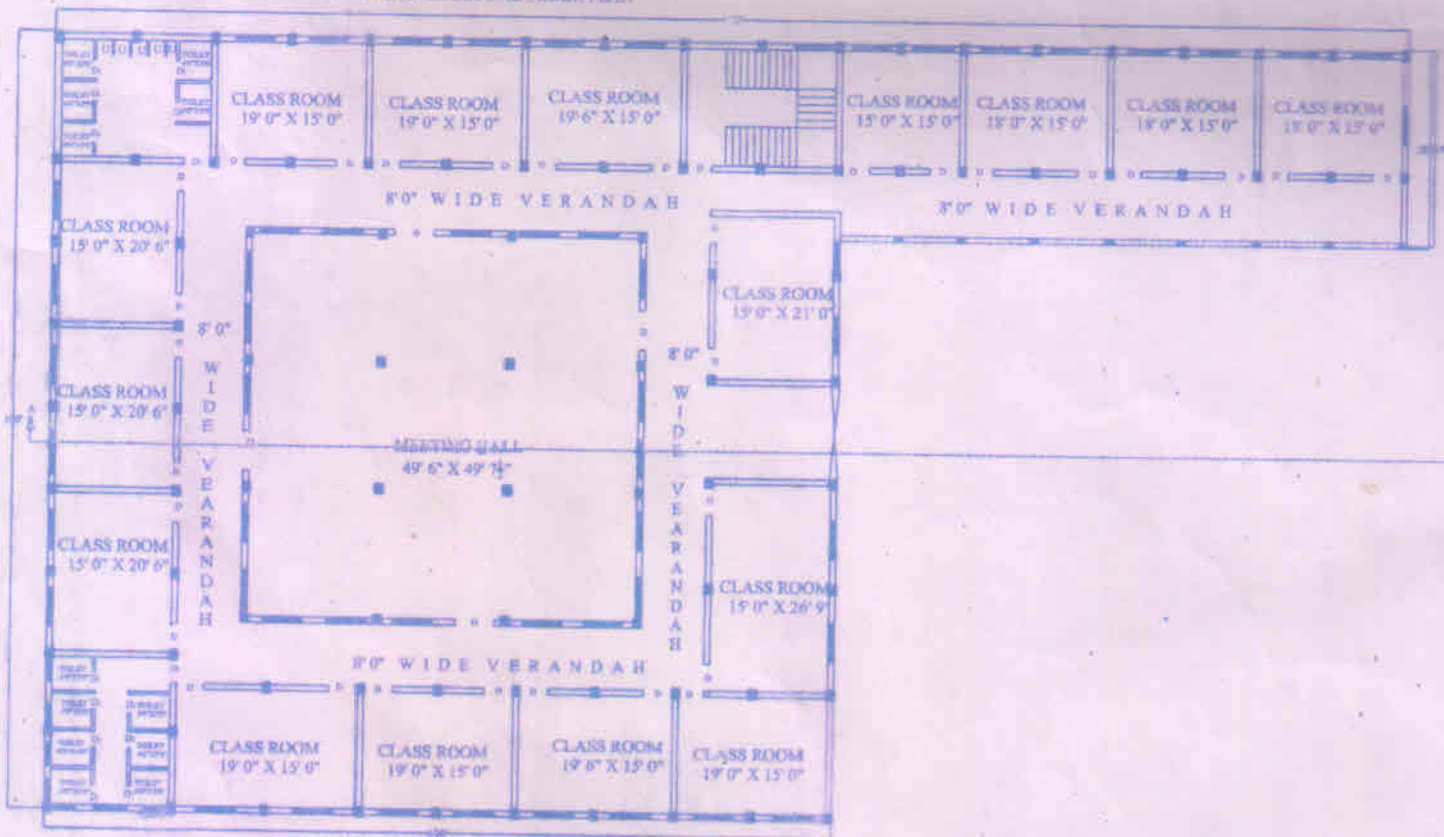
NEEL MANEE
A.K. SRIVASTAVA

APPLICANT'S S/G

PASSING AUTHORITY



PROPOSED SECOND FLOOR PLAN



EXISTING GROUND FLOOR PLAN